

Product Information

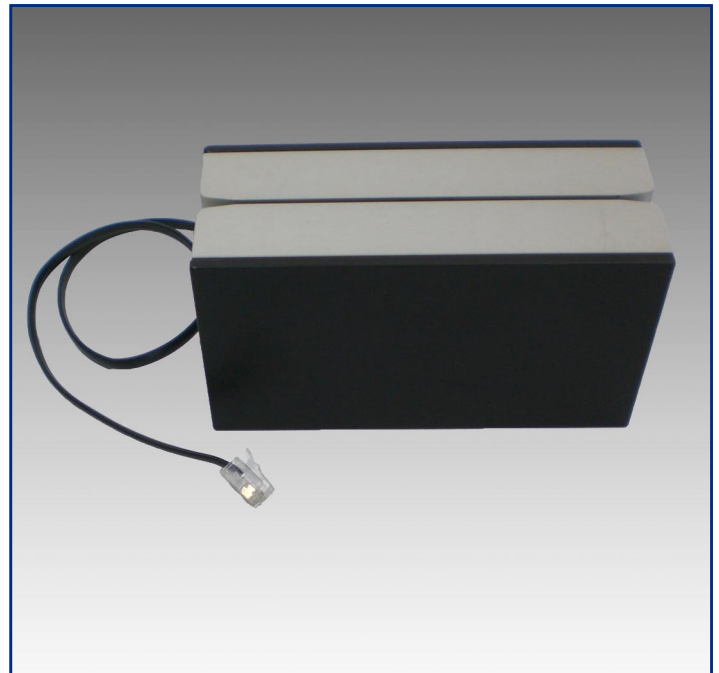
- Processing of magnetic data carrier with ISO and/or central tracks
- Anodized aluminum housing for outdoor-applications
- RS-232 interface

Información sobre el producto

- Transformación de soportes de datos magnéticos con ISO y/o en posición central
- Caja de aluminio anodizado para aplicaciones periféricas
- RS-232 interfaz

Information sur le produit

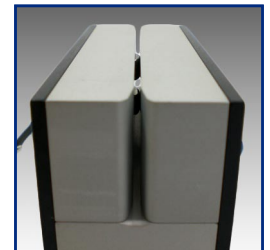
- Élaboration ou établissement de supports de données magnétiques dans les cartes ISO et/ou en position centrale
- Boîtier aluminium anodise pour applications outdoor
- Interface RS-232



**MAGNETIC SWIPE
READER**

**LECTOR MAGNÉTICO
MANUAL**

LECTEUR MAGNETIQUE



CCS Challenge Card Systems GmbH
Rombacher Hütte 12a
44795 Bochum
Germany
Tel. +49 (0)234 94391 - 0
Fax +49 (0)234 94391 - 99
info@ccs-cardtec.com
www.ccs-cardtec.com

CCS
built-in reliability

Dimensions

W 120 mm H 65 mm D 50 mm

Power Supply

5 V DC/0.5 W max. or 24 V DC/0.7 W max.

Cards

Thickness: 0.16 - 0.86 mm
Format: 54 x 85.6 mm
54 x 120 mm
Material: paper, compound, PVC

Interface

V.24/RS-232: 9 600 to 115 200 Baud
(RXD, TXD, GND)
Communication protocol on request

Environment

Range of temperature: 0 - 50 °C
Air humidity (RH): 20 - 80 %
non condensing
Vibration: 10 - 55 Hz
2 mm amplitude
along axis x, y and z
for max. 30 minutes

Microprocessor System

1 x ATMEL ATmega 128 (Flash Memory)

Electronic Control

Single chip controller

Coercivity

LOCO (300 Oe)/HICO (2 750 or 3 500 Oe)

Magnetic Characteristics

Track ISO 2/3 and central
or ISO 1/2 and central
F2F

Bit Densities

40 - 210 dpi

Maintenance and Service

Every 3 months or every 150 000 tickets:
Check magnetic head

Reliability

MTBF*: > 20 000 h
MCBF*: > 200 000 tickets
MTTR: < 30 min. in workshop

** without wear parts*

