

Product Information

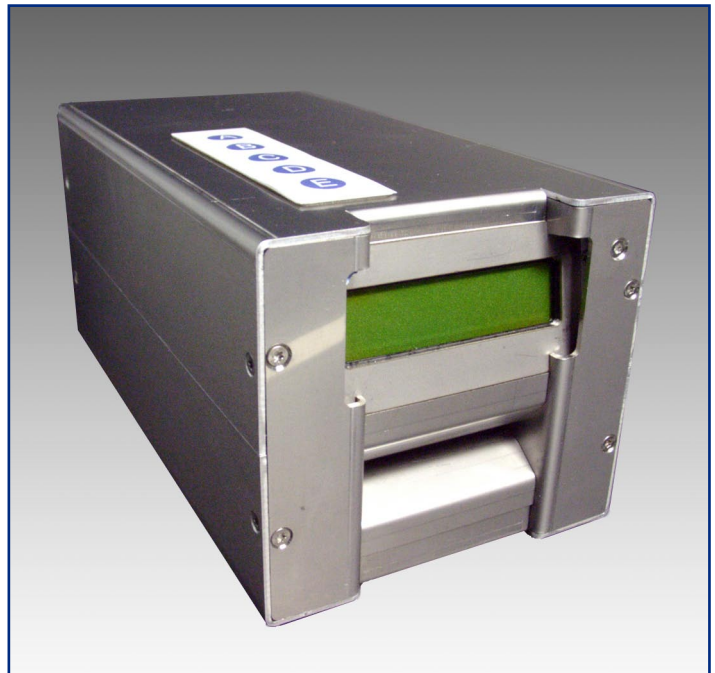
- Processing of magnetic data carriers
- Alphanumerical Display 2 x 16 characters)
- 5 function keys
- RS-232 interface
- Flash Memory
- Service counters
- For example applicable as Discount-Device or Validator

Produktinformation

- Verarbeitung von magnetischen Datenträgern
- Alphanumerische Anzeige (2 x 16 Zeichen)
- 5 Funktionstasten
- RS-232 Schnittstelle
- Flash Memory
- Service Counter
- Einsetzbar beispielsweise als Rabattiergerät oder Entwerter

Information sur le produit

- Traitement de titres à piste magnétiques
- Écran alphanumérique (2 x 16 caractères)
- 5 touches de fonction
- Interface RS-232
- Flash Memory
- Compteurs d'exploitation et de maintenance
- Utilisable par exemple comme Bonificateur ou Valideur



MAGNETIC READER/WRITER

in Housing

MAGNETISCHER KODIERER/LESER

im Gehäuse

LECTEUR/CODEUR MAGNETIQUE

en boîte



CCS Challenge Card Systems GmbH
Rombacher Hütte 12a
44795 Bochum
Germany
Tel. +49 (0)234 94391 - 0
Fax +49 (0)234 94391 - 99
info@ccs-cardtec.com
www.ccs-cardtec.com

CCS
built-in reliability

Dimensions / Weight

W 108 mm H 104 mm D 201 mm / 1.7 kg

Power Supply

24 V DC / 60 W max. (5 V DC internal)

Tickets

Thickness: 0.26 - 0.5 mm
Format: 54 x 85.6 mm
Material: paper, compound

Ticket Transport Speed

Normal transport: 300 - 500 mm/s

Interface

V24 / RS-232: 9 600 to 115 200 Baud
(RXD, TXD, GND, RTS, DTR)
Communication protocol on request

Environment

Range of temperature: 0 - 50 °C
Air humidity (RH): 20 - 80 %
non condensing
Vibration: 10 - 55 Hz
2 mm amplitude
along axis x,y and z
for max. 30 minutes

Microprocessor System

1 x ATMEL ATmega 128 (Flash Memory)

Memory

128 kB Flash Memory
8 kB RAM, 32 kB EEPROM

Coercivity

LOCO or HICO

Magnetic Characteristics

One Track: Track Central or ISO 1 or ISO 2 or ISO 3
(option: two tracks simultaneous)
F2F, other on request
ABA, IATA, THRIFT, other on request

Bit densities

75, 120, 160 or 210 bpi, other on request

User Interface

Alphanumerical display (2 x 16 characters)
5 function keys

Ticket Insertion

Detection by lightbarrier

Maintenance and Service

Every 3 months or every 300 000 tickets:
check magnetic head
Every 6 months or every 500 000 tickets:
check belts, photocells and DC motors
Every 12 months or every 6 000 000 tickets:
check stepper motor and rollers

Reliability

MTBF*: > 20 000 h
MCBF*: > 200 000 tickets
MTTR: < 0.5 h in workshop

** without wear parts*

