

## Product Information

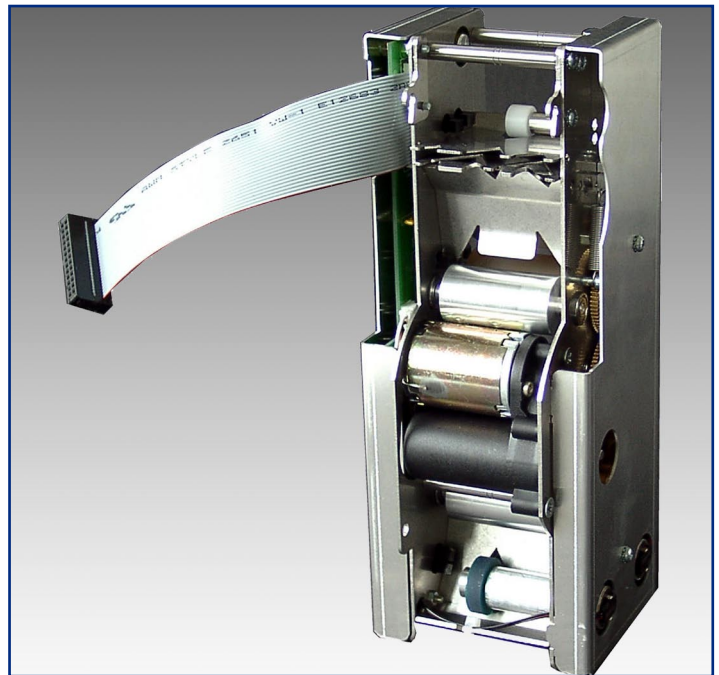
- Additional unit to a CCS 200n KGB® magnetic reader / writer
- Burster for fan folded paper tickets
- Two ticket track infeeding systems
- With additional parking position as rear ticket reservoir for a CCS 200n KGB®
- Simple electrical and mechanical link to a CCS 200n KGB®

## Produktinformation

- Ergänzungseinheit zum CCS 200n KGB® Schreib- / Lesegerät
- Papierreißvorrichtung zur Vereinzelung von leporello-gefalteten Papier-Tickets
- Zwei Papierzuführungen
- Mit zusätzlicher Parkstellung als hinteres Ticketreservoir für einen CCS 200n KGB®
- Einfache elektrische und mechanische Anbindung an einen CCS 200n KGB®

## Information sur le produit

- Module complémentaire au CCS 200n KGB® lecteur / codeur
- Dispositif de rupture pour séparation de tickets papier pliés en accordéon
- Jusqu'à 2 approvisionnements
- Position de parking supplémentaire pour séquestre de tickets pour le CCS 200n KGB®
- Raccordement mécanique et électrique simple au CCS 200n KGB®



## BURSTER

## REISSER

## RUPTEUR



CCS Challenge Card Systems GmbH  
Rombacher Hütte 12a  
44795 Bochum  
Germany  
Tel. +49 (0)234 94391 - 0  
Fax +49 (0)234 94391 - 99  
info@ccs-cardtec.com  
www.ccs-cardtec.com

**CCS**  
built-in reliability

### Dimensions / Weight

W 96 mm H 230 mm D 84 mm / 1.6 kg

### Power Supply

24 V DC / 15 W  
5 V DC / 1.5 W

### Tickets

Thickness for parking unit: 0.16 - 0.86 mm  
Thickness for bursting: 0.16 - 0.3 mm  
Format: 54 x 85.6 mm  
Material: paper, compound  
*Bursting Force:* 4 - 7.5 daN

### Tickets Transport Speed

Parking unit: 250 mm/s  
Feeding: 100 mm/s

### Card Chute

Closed, complete control  
Can be linked to a CCS 200n KGB®

### Special Features

Press a key on CCS 200n KGB® to empty the chute automatically, automatic feed

### Interface to a CCS 200n KGB®

Parallel, 8 inputs / 8 outputs  
Power: 24 V / 5 V

### Environment

Range of temperature: 0 - 50 °C  
Air humidity (RH): 20 - 80 %  
non condensing

### Motors

4 x 24 V DC geared motors

### Drives

3 x roller drivers flanged on motor shaft  
1 x drive flanged to motor shaft with gears

### Card Detection Sensors

4 x photo sensor for feeding  
2 x photo sensor for parking unit  
3 x photo sensor for bursting

### Transport System

#### Feeding:

2 x dust repellent rubber coated drive rollers

#### Parking Unit:

1 x dust repellent rubber coated drive rollers

#### Burster:

4 x PU rollers

### Maintenance and Service

Every 6 months or every 250 000 tickets:

check light barriers and DC motors

Every 12 months or every 500 000 tickets:

check rollers

### Reliability

MTBF\*: > 20 000 h  
MCBF\*: > 200 000 tickets  
MTTR: < 0.5 h in workshop

\* without wear parts

