

Product Information

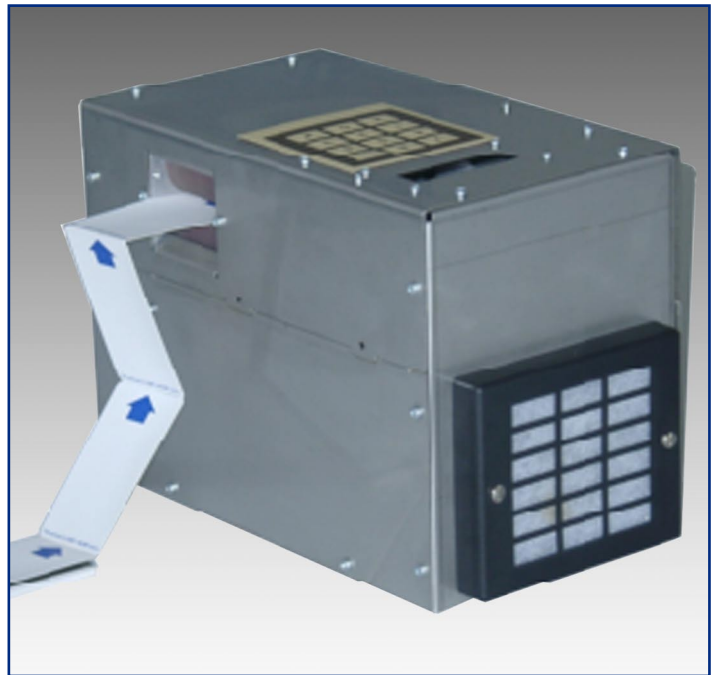
- Bursting of fanfolded paper tickets
- High processing speed: 20000 cards/h
- Variable definition of batch size
- Electronical batch control
- Option: Adaption of stacker

Produktinformation

- Vereinzelung von Leporello gefalteten Papiertickets
- Hohe Verarbeitungsgeschwindigkeit von 20000 Karten/h
- Variable Definition von Batchgrößen
- Elektronische Batchkontrolle
- Optional: Anschluss eines Ablagesystems

Information sur le produit

- Séparation de tickets en papier pliés en accordéon
- Vitesse de traitement élevée de l'ordre de 20000 cartes par heure
- Définition variable de la taille des lots
- Contrôle électronique des lots
- Option: connexion d'un système de rangement



BURSTER

for ticket production

REISSER

für Tickteproduktion

COUPE-PAPIER

pour la production de tickets



CCS Challenge Card Systems GmbH
Rombacher Hütte 12a
44795 Bochum
Germany
Tel. +49 (0)234 94391 - 0
Fax +49 (0)234 94391 - 99
info@ccs-cardtec.com
www.ccs-cardtec.com

CCS
built-in reliability

Dimensions

W 300 mm H 210 mm D 170 mm

Power Supply

230 V AC / 50 Hz

Cards

Thickness: 0.16 - 0.3 mm
Format: 54 x 85.6 mm
Material: paper, compound

Capacity

Max. 20000 card/h

Interface

Stand alone unit

Electronic Control

Via single chip processor

Environment

Range of temperature: 5 - 45 °C
Air humidity (RH): 20 - 80 %
non condensing
Vibration: 10 - 55 Hz
2 mm amplitude
along axis x, y and z
for max. 30 minutes

Motor

1 230 V AC geared motor

Card Detection Sensors

2 x photocells

Display

2 lines by 16 characters

Keypad

Numeric foil keypad

Maintenance and Service

Every 4 months or every 1 000 000 tickets:

Reliability

MTBF*: > 20 000 h
MCBF*: > 200 000 tickets
MTTR: < 1 h in workshop

** without wear parts*

