

Product Information

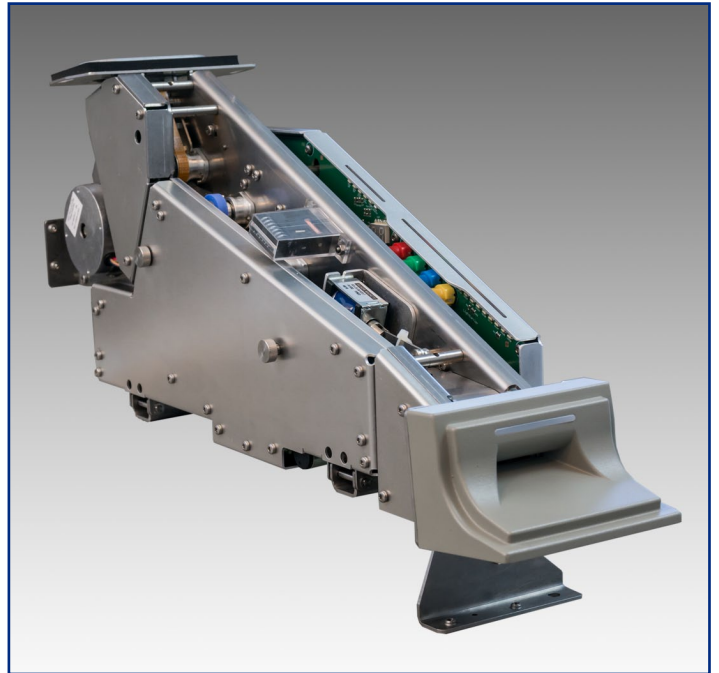
- Processing of Edmondson Tickets with central magnetic stripe
- 4-ways ticket handling
- LoCo or HiCo (optional)
- Central stripe read/write/verify
- Impact printing lateral to magnetic stripe
- Ticket Turner
- Bad ticket facility
- Interfaces: RS-232, USB (optional)

Produktinformation

- Verarbeitung von Edmondson-Tickets mit zentralem Magnetstreifen
- 4 Zuführungsausrichtungen für das Ticket
- LoCo oder HiCo (optional)
- Mittelspur Lesen/Schreiben/Prüfen
- Matrix-Druck neben Magnetstreifen
- Ticketwender
- Bad-Ticket-Facility
- Schnittstellen: RS-232, USB (optional)

Information sur le produit

- Traitement de titres Edmondson à pistes magnétiques (Tickets avec piste magnétique centrée)
- 4 directions d'insertion de tickets
- LoCo ou HiCo (optionnel)
- Piste centrée lire/écrire/vérifier
- Impression à coté de la piste magnétique
- Dispositif « tournoiement de tickets »
- Bad-Ticket-Facility
- Interface: RS-232, USB (optionnel)



EDMONDSON MAGNETIC READER/WRITER FOR GATES

with impact printing

EDMONDSON MAG. SCHREIB-/LESEGERÄT FÜR DREHKREUZE

mit Matrix-Drucker

EDMONDSON LECTEUR/ENCODEUR MAGNÉTIQUE POUR TOURNIQUETS

avec d'impression impact



CCS Challenge Card Systems GmbH
Rombacher Hütte 12a
44795 Bochum
Germany
☎ +49 (0)234 94391 - 0
☎ +49 (0)234 94391 - 99
info@ccs-cardtec.com
www.ccs-cardtec.com



Dimensions / Weight

W 115 mm H 260 mm D 490 mm / 5,5 kg

Power Supply

17- 32 V DC, approved for UPS operation
150 W max.

Tickets

Type: Edmondson (TFC.0)
Format: 30 x 66 mm
Material: paper, compound,
composite
Thickness: 0.20 - 0.35 mm

Ticket Transport Speed

Normal transport and
magnetic processing: 350 - 1 000 mm/s

With printing depending
on paper quality: 350 mm/s

Print Head for Impact Printing

Type: matrix 9 needles
Print height: 3.1 mm
Print length: 28 characters per line
longitudinal
(one line longitudinal
printing in fixed position
only),
lateral to magnet stripe

Microprocessor System / Memory

Firmware upgradable Microcontrollers
Service-Counter

Optional:
Electromechanical Counter, non-resettable



Magnetic Characteristics

Coercivity: HiCo or LoCo
central track

Bit Densities

33 - 66 bpi, others on request

Bad Ticket Facility

By passive ejection flap (without ticket bin)
Terminator for paper tickets (optional)

Door Shutter

1 x solenoid driven mechanism

Interface

RS-232 up to 115 200 Baud
USB (optional)
Communication protocol on request

Reliability

MTBF*: > 20 000 h
MCBF*: > 200 000 tickets
MTTR: < 0.5 h in workshop

** without wear parts*

