

Product Information

- Single-wise processing of contactless smart cards (CSC)
- Integrated CSC antenna
- Exchangeable card container
- Spending 3 600 cards per hour
- RS-232 interface
- USB interface (option)
- Flash Memory
- Reload-function with muzzle
- Bad-Card-Facility

Produktinformation

- Einzelverarbeitung von Contactless Smart Cards (CSC)
- Integrierte CSC-Antenne
- Abnehmbarer Karten-Container
- Ausgabe von 3 600 Karten pro Stunde
- RS-232 Schnittstelle
- USB-Schnittstelle (optional)
- Flash Memory
- Reload-Funktion durch das Mundstück
- Bad-Card-Facility

Information sur le produit

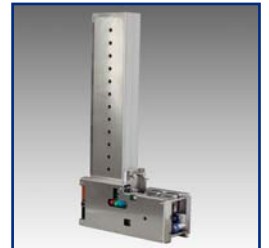
- Traitement de cartes sans contact (CSC)
- Antenne CSC intégrée
- Conteneur de cartes échangeable
- Distribution de 3 600 cartes par heure
- Interface RS-232
- Interface USB (en option)
- Flash Memory
- Fonctionnalité de chargement par la bouche
- Fonctionnalité « poubelle » pour cartes en panne



SINGLE CSC DISPENSER

SPENDER FÜR CSC

EMMETEUR DE CSC



CCS Challenge Card Systems GmbH
Rombacher Hütte 12a
44795 Bochum
Germany
☎ +49 (0)234 94391 - 0
☎ +49 (0)234 94391 - 99
info@ccs-cardtec.com
www.ccs-cardtec.com



Dimensions

W 125 mm H 400 mm D 310 mm

Power Supply

24 V DC (5 V DC internal)

Container Capacity

0.5 mm thickness: max. 800 cards

Cards

Thickness: 0.5 - 0.8 mm
Format: 54 x 85.6 mm
Material: plastics (PVC)
 others on request

Processing Time

1.2 s per card (typically)
depending on communication

Card Transport Speed

Normal transport: 300 - 700 mm/s

Special Feature

Bad Card Facility

Interface

RS 232: 9 600 - 460 800 Baud (RXD, TXD, GND)
Communication protocol on request

Microprocessor System

ARM Cortex-M4

Memory

1 MiB Flash Memory
256 KiB RAM, 2 KiB FRAM

Maintenance and Service

Every 6 months or every 250 000 cards:
Check separating roller

Every 6 months or every 500 000 cards:
Check belts, photocells and DC motors

Every 12 months or every 3 000 000 cards:
Check stepper motor and rollers

Environment

Range of temperature: 0 - 50 °C

Air humidity (RH): 20 - 80 %
non condensing

Vibration: 10 - 55 Hz
2 mm amplitude
along axis x, y and z
for max. 30 minutes

Reliability

MTBF*: > 20 000 h

MCBF*: > 200 000 tickets

MTTR: < 0.5 h in workshop

** without wear parts*

