

Product Information

- Dispensing of contactless tickets (RFID)
- Optional: Direct thermal printing on thermo-sensitive surfaces, graphic printing
- Integrated CSC antenna
- Two Integrated bursters, easy to take off
- Four ticket feeder for Leporello tickets or rolled tickets

Produktinformation

- Spenden von kontaktlosen Tickets (RFID)
- Optional: Direkter Thermodruck auf thermo-sensitive Flächen, grafikfähig
- Integrierte CSC Antenne
- Zwei Integrierte Reißeinheiten, leicht abnehmbar
- Vier Zuführungen für Leporello- oder Rollentickets

Information sur le produit

- Distribution de tickets sans contact (RFID)
- En option: Impression thermique directe sur supports thermosensitifs, impressions graphiques
- Antenne CSC intégrée
- Double Rupteur intégré
- Quadruple alimentation pour de tickets pliés en accordéon ou de tickets sur rouleau



CSC TICKET ISSUER

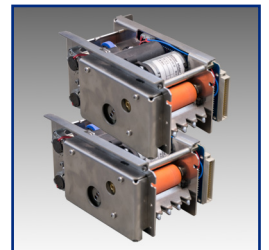
with thermal printing module and burster with 4 ticket feeder

CSC TICKET SPENDER

mit Thermodruckmodul und Reißeinheit mit 4 Ticket-zuführungen

DISTRIBUTEUR DE TICKETS CSC

avec module d'impression thermique et rupteur avec quadruple alimentation



CCS Challenge Card Systems GmbH
Rombacher Hütte 12a
44795 Bochum
Germany
☎ +49 (0)234 94391 - 0
📠 +49 (0)234 94391 - 99
info@ccs-cardtec.com
www.ccs-cardtec.com



Dimensions (Without Muzzle)

W 140 mm H 390 mm D 210 mm

Power Supply

24 V DC (5 V DC internal)
150 W max. with graphic printing 200 W max.

Tickets

Thickness: 0.2 - 0.6 mm
Format: 54 x 85.6 mm
Material: paper, compound

Bursting force for tickets: 4.0 - 8.0 daN

Ticket Transport Speed

Normal transport: 350 – 600 mm/s
Printing depending
on paper quality: 50 – 100 mm/s

Thermal Print Head

Resolution: 8 dot/mm
Max. print width: 48 mm

Special Feature

Bad Ticket Facility

Interface

V.24/RS-232 up to 115 200 Baud
In future optional: USB-interface
Communication protocol on request

Microprocessor System / Memory

Firmware upgradable Microcontrollers
Service-Counter

2x Internal Burster Modules

Each:
2x ticket feeder for fanfold ticket web with:
2 x 24 V DC geared motors for ticket feeding
2 x roller drivers flanged on motor shaft
1x drive flanged to motor shaft with gears
for ticket web bursting

Reliability

MTBF*: > 20 000 h
MCBF*: > 200 000 tickets
MTTR: < 0.5 h in workshop

** without wear parts*

