

Product Information

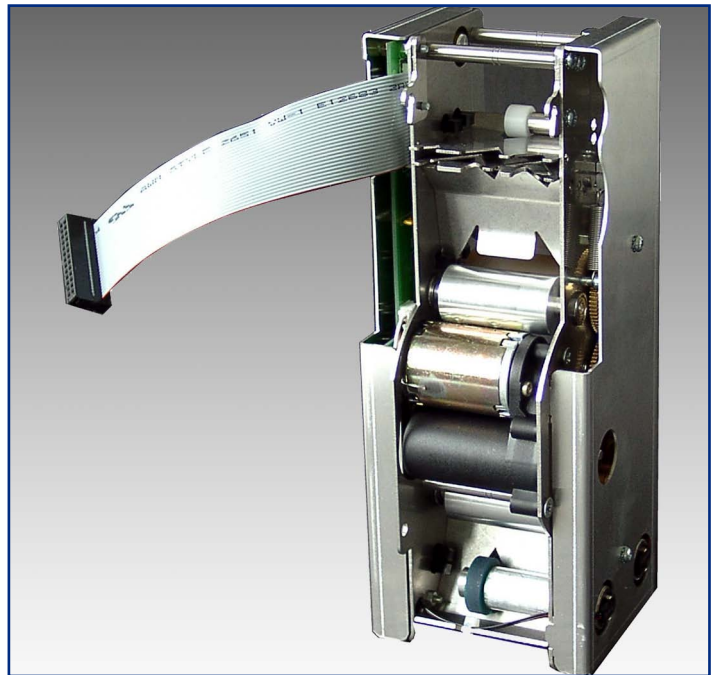
- Additional unit to a CCS 20nn KGB® magnetic reader / writer
- Burster for fan folded paper tickets
- Up to two ticket infeed systems
- With one or two parking positions as rear ticket reservoir for the CCS 20nn KGB®
- Simple electrical and mechanical link to a CCS 20nn KGB®

Produktinformation

- Ergänzungseinheit zum CCS 20nn KGB® Schreib- / Lesegerät
- Papierreißvorrichtung zur Vereinzelung von leporello-gefalteten Papier-Tickets
- Eine oder zwei Papierzuführungen
- Mit ein oder zwei Parkstellungen als hinteres Ticketreservoir für einen CCS 20nn KGB®
- Einfache elektrische und mechanische Anbindung an einen CCS 20nn KGB®

Information sur le produit

- Module complémentaire au CCS 20nn KGB® lecteur / codeur
- Dispositif de rupture pour séparation de tickets papier pliés en accordéon
- Jusqu'à deux systèmes d'approvisionnement
- Une ou deux positions de parking comme réservoir de tickets pour le CCS 20nn KGB®
- Raccordement mécanique et électrique simple au CCS 20nn KGB®



BURSTER

REISSER

RUPTEUR



CCS Challenge Card Systems GmbH
Rombacher Hütte 12a
44795 Bochum
Germany
☎ +49 (0)234 94391 - 0
☎ +49 (0)234 94391 - 99
info@ccs-cardtec.com
www.ccs-cardtec.com



Variants

CCS 4007 - X01 KGB®

- 1 ticket track feeding system
- 1 parking position

CCS 4007 - X02 KGB®

- 2 ticket track feeding systems
- 1 parking position

CCS 4007 - X04 KGB®

- 1 or 2 ticket track feeding systems
- 2 parking positions

Dimensions / Weight

CCS 4007 - X01 KGB®

- W 96 mm H 230 mm D 84 mm / 1.7 kg

CCS 4007 - X02 KGB®

- W 96 mm H 230 mm D 84 mm / 1.7 kg

CCS 4007 - X04 KGB®

- W 110 mm H 230 mm D 110 mm / 1.9 kg

Power Supply

- 24 V DC / 20 W max.
- 5 V DC / 1.5 W max.

Tickets

- Thickness for parking unit: 0.16 - 0.86 mm
- Thickness for bursting: 0.16 - 0.30 mm
- Format: 54 x 85.6 mm
- Material: paper, compound
- Bursting Force: 4 - 7.5 daN

Ticket Transport Speed

- Parking unit: 250 mm/s
- Feeding: 100 mm/s

Ticket Chute

- Closed, complete control
- Can be linked to a CCS 200n KGB®

Special Features

- Press a key on CCS 200n KGB® to empty the chute automatically, automatic feed

Reliability

- MTBF*: > 20 000 h
- MCBF*: > 200 000 tickets
- MTTR: < 0.5 h in workshop

* without wear parts

